

Ind-17 Industry computer

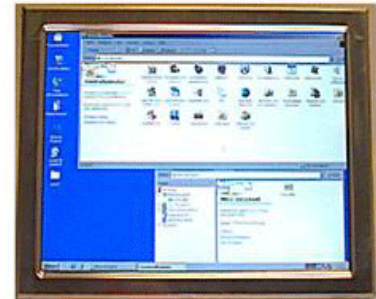
Industry computer Ind-17:

- Bright 17" display
- Touch screen
- Time reporting
- Machine interface
- Wireless LAN(Wlan)



Area of usage:

Industry/office/store-computer for wall or table mounting. Time reporting for handling payments, project reporting, machine steering etc. Also suitable as information kiosk in offices, stores, exhibits or other public places where something should be shown such as at car stores, museums, furniture stores etc. Can be equipped with motherboard for multimedia, with support for sound and movies. On the screen there can be shown pictures, commercial movies, a homepage with information or similar.



Construction:

Has a touch screen which makes it small and easy to mount. Made for harsh environments with a fanless construction that is sealed to keep dirt away. All the chassis is made in aluminium. Customer adapted chassis is available such as transparent or coloured coating etc. A glass plate in front of the LCD-screen, 1GHz processor (option 1,6-2GHz) and 512mb memory as standard. For even better protection from dirt you can install an extra plastic screen which covers all surfaces where dirt, dust and similar could gather. The plastic screen is suitable for environments where a high level of cleanliness is required.

Option:

- keyboard
- external CD/DVD
- 12" , 15" or 19" display



Ind-17 back



Ind-17 front